

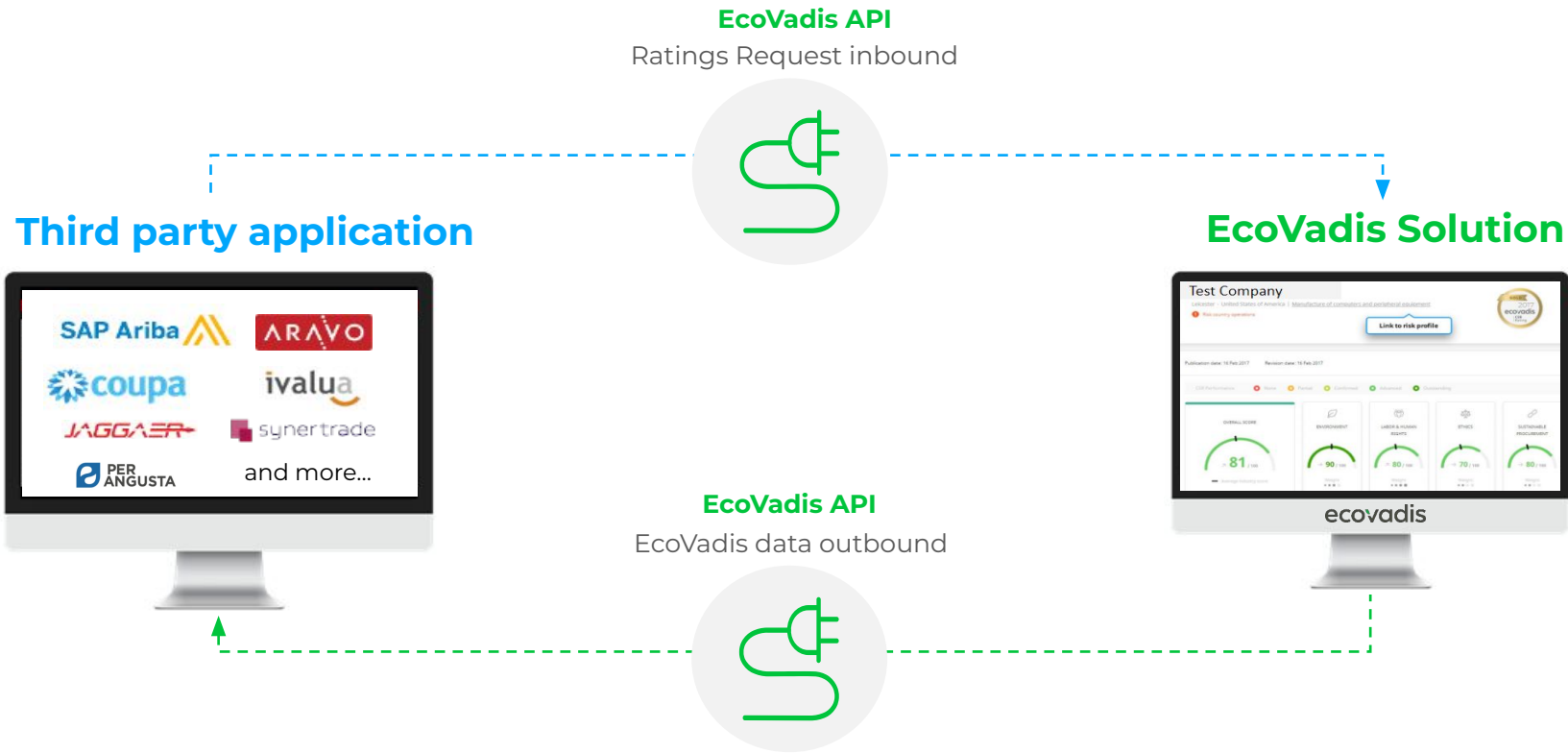


ecovadis

EcoVadis API Overview

2024

EcoVadis API | What is it about?



EcoVadis API | What do we offer?



EcoVadis API access enables the exchange of sustainability data with third-party applications*

Key Benefits



+ 200 Data Points
Details in the appendix



Standard RESTful API
easy to use documentation
for developers



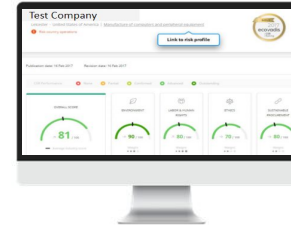
Quick - Win
+10 Partners' Integrations
adopted by multiple clients

*Integrating with third-party applications, including in-house systems, is customer responsibility.

API Capabilities

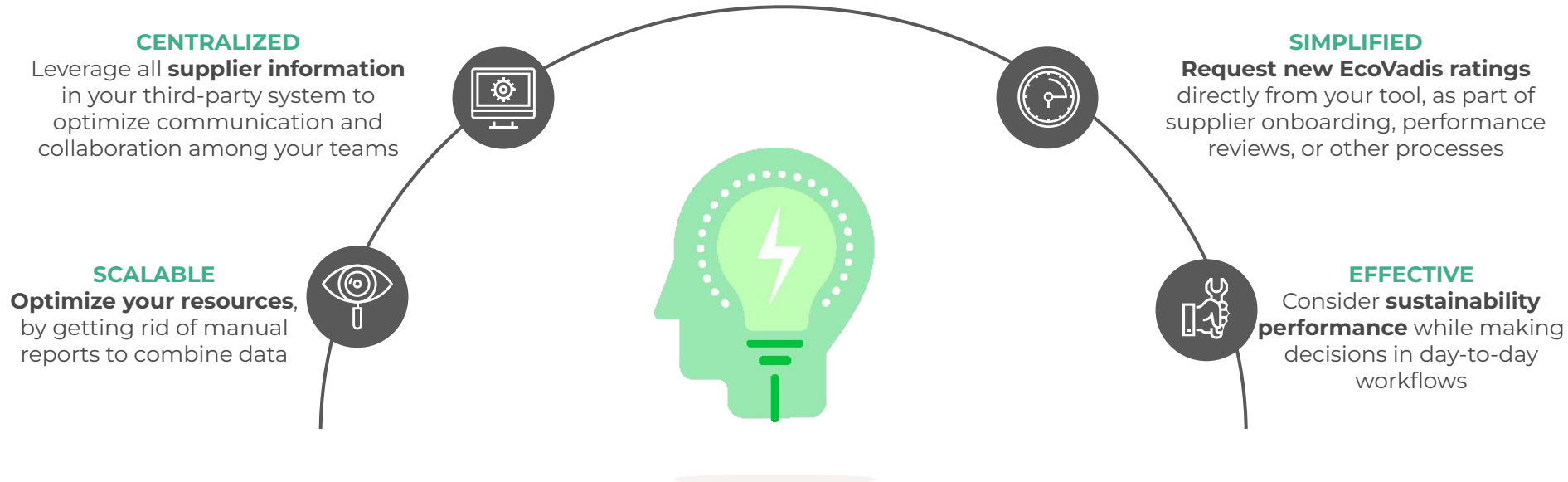
- **Add and update partners** in IQ Plus
- Check **risk analysis results and details i.e.:**
 - Overall and Theme Risks
 - DocScan and LNM findings
 - Recommendations and Action Plan
- **Request and keep track of EcoVadis assessments**
- Check **Scorecard results and details i.e.:**
 - Overall and Theme Scores and Trends
 - Publication date
 - Scorecard Validity
 - KPIs
 - Scope Change history
 - Carbon Maturity Level (only with CAM subscription)
- Securely access the full **scorecard**, as displayed on the EcoVadis platform, via an encrypted link

Refer to [appendix](#) to discover all data points included



EcoVadis API | Vision & Benefits

Our focus is to put EcoVadis sustainability data at the fingertips of our customers



EcoVadis API helps to **streamline your sustainable procurement program** by leveraging ESG data into process improvement, spend management, or SRM

EcoVadis API | Examples of Partners' integrations



Take advantage of the available Partners' integrations for a **faster implementation*** (currently only Ratings data)



*Integrating with third-party applications, including in-house systems, is customer responsibility.

**Extra cost

For the complete list, please check our [partnerships website](#)



EcoVadis API | How does it work with Ratings?

Upstream

ONBOARDING

Assessment requests can be sent from your tool

- Integration ID
- Supplier information
- Supplier contact
- Requester information

Downstream

IMPROVEMENTS

Follow your suppliers' improvements

- Number of corrective action plans
- Strength and improvement areas details and 360 findings [via encrypted link to scorecards](#)

Downstream

ASSESSMENT

Monitor ongoing assessments

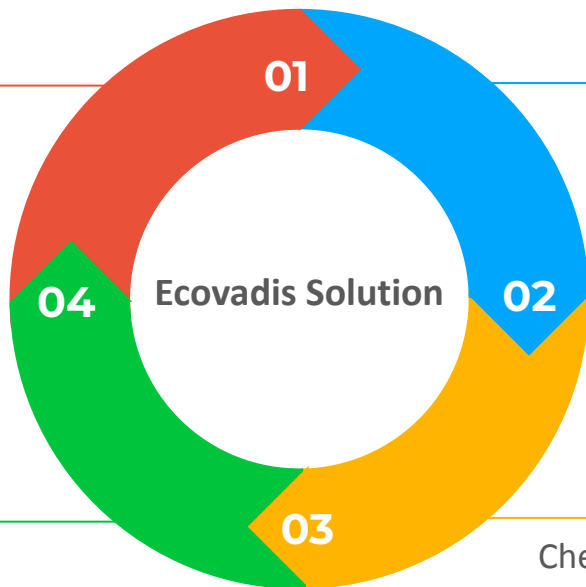
- Assessment and Sharing status
- Request outcome
- Launch date and deadlines
- Buyer action if needed

Downstream

RESULTS

Check the scorecard results directly from your tool

- Publication and Expiration date
- Overall and Theme Scores and Trends
- Scope Change details
- KPIs details
- Carbon Scorecard
- ...



EcoVadis API | How does it work with IQ Plus?

Your System



Real-time Supplier Risk Data

Country, Industry, Procurement, and
Sustainability Risk

Environment, Labor & Human Rights, Ethics,
and Sustainable Procurement Theme Risks

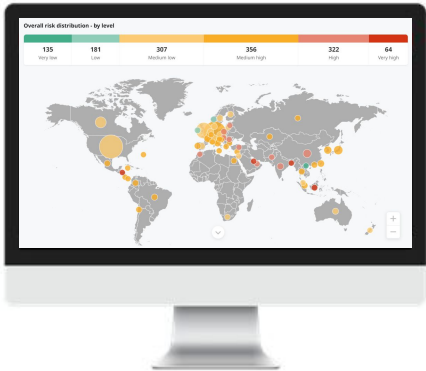
DocScan Findings

Live News Monitoring Findings

Improvement Recommendations

Supplier Action Plans

IQ Plus



EcoVadis API | Getting started

1

Discover our [Resource Center](#)

Explore all the **available guides** and find all information you need for our EcoVadis API

- Tech Spec & Key Use Cases
- How to use Sandbox
- Postman Collection

2

Obtain **User credentials** from EcoVadis

Request sandbox and production credentials through your Onboarding or Account Manager

3

Develop/activate integration with a third party application

Reach out to one of our partners for support

4

Assign **Integration IDs** to your suppliers to enable the dataflow

Review [the Integration IDs guide](#)



EcoVadis API **Included in** **IMPACT PACKAGE**



EcoVadis API **As an Add-on for** **ESSENTIALS,** **ENTERPRISE AND** **ACCELERATE** **PACKAGE**

What's included?

ACCESS TO ECOVADIS API:

- ✓ Exchange of selected data across IQ Plus, Carbon Action Module & Ratings (Upstream & Downstream)
- ✓ Access to testing and production environment

ACCESS TO RESOURCE CENTER:

- ✓ Centralized guides library:
 - ✓ Partners' Integration description and activation guide
 - ✓ API Technical Specifications
 - ✓ Sandbox description
 - ✓ ...

HELP DESK:

- ✓ Contact EcoVadis in case of any encountered issue
- > Additional costs may be applicable on partner's side
- > The fee does not cover the implementation project or any API customizations
- > Fee should be invoiced before access to EcoVadis API is granted

ecovadis

Appendix

Resource Center



EcoVadis API - Resource Center

Discovery



[API Basic Definitions](#)



All Partners' Integration -
[website](#) & [guides](#)



All data available through
[EcoVadis API](#)

Access



Credentials: [guide](#)



Integration IDs: [guide](#)

Client resource center



All documents, both technical and procedural, for activating or building a connector to our API are available in our [client resource center](#)*

**Access requires a client login and is available after purchase.*

Support



[FAQ](#)



API support:
[Get support here](#)





API (Application Program Interface)

A set of tools to build software applications, with clearly defined methods of communication between various software components.

Our API is completely flexible, so that Clients receive only the data they need.



Partners' Integration

Standard connector developed and maintained by a partner to allow an easy activation. Any customization, if possible, is done by partners.



Upstream

Upstream refers to the direction towards the original maintainers of the software (in this case EcoVadis). Through the upstream method, Clients can send assessment requests to EcoVadis from third-party applications.



Downstream

Downstream refers to the direction away from the original maintainers of the software. This means that Ecovadis sends the Scorecard information to the clients third-party tool. Clients automatically receive their partner's scorecard results directly in the external tool.



Sandbox environment

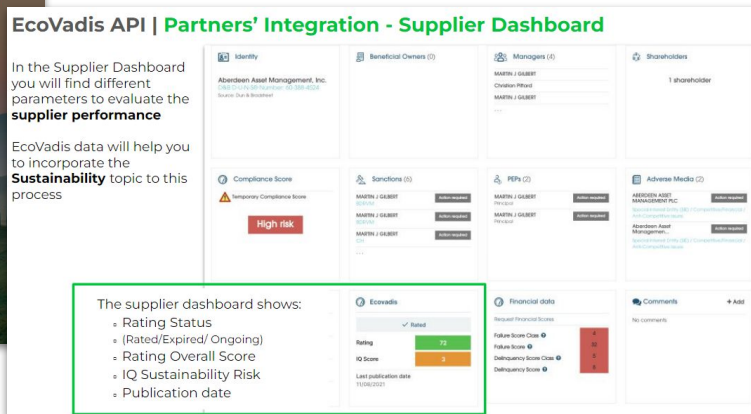
A test environment in which software developers can test new functions without impacting the real data.

Production environment

Clients access real data located in their EcoVadis network via API. All changes via API will have impact and vice-versa.



- Check our step-by-step guide to discover Partner's integration
- Contact the Partner to activate it



Find the complete guide in our [Client Resource Center](#)





Credentials: why do I need testing and production?



EcoVadis offers access to **API production** and **testing environments (API Sandbox)**



Before going live with the integration, we strongly recommend to test the call queries using the **API Sandbox**

Our Sandbox environment contains dummy data that will allow you to check the information coming via API



Once the data is received and displayed successfully, you can move on to the production environment with **real information**

Request the credentials through your **Onboarding** or **Account Manager**





What is the Integration ID?

It is a **external unique identifier** assigned to each rated company in your EcoVadis network to establish a relationship with the corresponding company in the third-party application.

You can use any Supplier ID registered in the third-party application, such as the smVendorID in SAP Ariba or Coupa ID in Coupa



Why is the Integration ID important?

The Integration ID is crucial for **data synchronization** and ensuring data **consistency** across integrated systems.



Who is responsible?

You, since you know your partner's database better than anyone else



How to set up the Integration ID?

You can easily manage your rated companies' Integration IDs on your EcoVadis platform:

Option 1: Add or update integration IDs in batch

Integration Settings

Manage Integration IDs

This bulk import tool allows you to edit Integration IDs offline. Follow the steps below to get started.

1. Download the current list
2. Upload the updated file

Drag & drop files here or simply [browse files](#)

Note: you must use the EcoVadis template provided above.

Entity name	Country/Territory	Integration ID 1	Integration ID 2	Integration ID 3	Integration ID 4
MAGIC FIBER	Bangladesh	ID0000	MF123		254
3M SANTE	France	215454			
HIRE ME LTD	France	ID12358			250
TECH MANIA CHINA LTD	China	ID12360	ID123601	ID123602	263

Option 2: Add or update integration IDs one by one

CENTROMOTOR SAS

Labelle | Freight transport by road

2019 ecoVadis CSR Rating

62/100 91st percentile

Company information

www.centromotor.com

Company size M (100 - 499 employees)

EVID UX004875

Primary contact

John Doe
jsaeth@ecovadis.com
+1 045-204-8499

Specific information

Requesting contact

Aaron Leonard
aleonard@ecovadis.com

Activation status

Active

Alternative names

CENTROMOTOR SAS,
CENTROMOTOR S.A

Tags

Spend Types

Cables X

Category

Battery X

Integration IDs

ID 2030 X

- ✓ It takes 24 hours for the Integration IDs to impact the system
- ✓ Partners with no Integration ID assigned will not be appearing in third-party applications
- ✓ There is a limit of 10 Integration IDs per partner, to allow requesting companies to integrate with different systems



How to set up the Integration ID?

If you use IQ Plus, you can also assign the Integration ID when uploading partners by adding it in the Unique ID column in the template (step 1). As a result, when you send an assessment request from IQ Plus, the Unique ID will automatically migrate to the EcoVadis platform as Integration ID (when the appropriate boxes are checkmarked - step 2).

Option 3: Add Integration IDs in your IQ Plus upload, in the Unique ID column. Checkmark the Integration ID option when sending the request

D	E	F	G	H	I
DUNS number	Tax ID or other identification number	Country	Tags	IQ ID	Unique ID

Integration IDs

Add Integration IDs to EcoVadis Ratings ⓘ

☒ Use existing Unique ID as Integration ID

☒ Add other Integration IDs

- ✓ It takes 24 hours for the Integration IDs to impact the system
- ✓ Partners with no Integration ID assigned will not be appearing in third-party applications
- ✓ There is a limit of 10 Integration IDs per partner, to allow requesting companies to integrate with different systems



What Data Points Are Available Through Our Ratings API? **DOWNSTREAM** 1/3

Rated Company Information	Integration ID, rated company name in EcoVadis platform and parent company (if existing), Tax ID, EV ID, city, stated and country, website, ISIC category, employee range, size, turnover range, whether the company is based in a risk country or not (yes/no)
Rated Company Contact Information	First and Last name, email, phone number
Assessment Status	Campaign name, current stage and status (registration, questionnaire, expert analysis, sharing pending, queued, not under assessment, action required), progress status (not yet connected, action required, answering, queued,...), request outcome (scorecard published, cancelled, refused to participate, no response), sharing status (accepted, declined, canceled), source (invited/not invited for self-registered), launch date, deadline, decline date, comment, buyer action needed details, last contact date
Assessment Score	Published date, overall and theme scores and trends, scorecard link, expired flag (true/false), number of documents uploaded, scope change flag (true/false), initially invited company (if scope changed)
Requesting Company Information	Requesting contact first and last name, email, tags assigned, number of integrations IDs assigned
Scope Change Details	Name, country and EV ID of target company, current stage and status, request outcome, sharing status, overall and theme scores, published date and scorecard link
Carbon Score	Integration and EV ID, sharing acceptance date (if applicable), carbon management level (insufficient, beginner, intermediate, advanced, leader), carbon scorecard link, expired flag (true/false), carbon scorecard published date



What Data Points Are Available Through Our Ratings API? **DOWNSTREAM** 2/3

Score History	Publication date of selected score, overall and theme scores and trends, scorecard link, expiration flag (true/false), scope change flag (true/false), initially invited company (if scope changed)
Tags and Flags	Code and name of tag assigned
KPI	KPI code, name, theme and active flag (true/false)
Custom Questions	Custom question ID, custom question text, strength and improvement areas related to custom question, number of documents attached to the answer
Corrective Action Plan	Number of corrective action plans requested by the client, number of all corrective actions in rated company's plan, number of corrective actions draft, in progress, rejected, completed, overdue, without approval, not approved, closed, nearest deadline, last edit date, number of documents shared
IQ Plus	Country Code, Industry, Industry Verification Status Partner Risk: Overall risk, Sustainability risk, Procurement risk, Scan risk, Industry risk, Country risk Themes risks: Sustainability Risk, Scan risk, Industry Sustainability risk, Country Sustainability risk Criteria Activation Levels: Name, Theme, Activation level, Description, Issue Description Doc Scan Findings: Document category, Document Type, Related themes, Publication ear, Expiration Date, Document ID Live News: ID, Title, Text, Source, URL, Publication Date Recommendations: Priority, Action, Lens, Status Action Plan: Action, Status, Due Date



What Data Points Are Available Through Our Ratings API? **DOWNSTREAM** 1/3

Rated Company Information	Integration ID, rated company name in EcoVadis platform and parent company (if existing), Tax ID, EV ID, city, stated and country, website, ISIC category, employee range, size, turnover range, whether the company is based in a risk country or not (yes/no)
Rated Company Contact Information	First and Last name, email, phone number
Assessment Status	Campaign name, current stage and status (registration, questionnaire, expert analysis, sharing pending, queued, not under assessment, action required), progress status (not yet connected, action required, answering, queued,...), request outcome (scorecard published, cancelled, refused to participate, no response), sharing status (accepted, declined, canceled), source (invited/not invited for self-registered), launch date, deadline, decline date, comment, buyer action needed details, last contact date
Assessment Score	Published date, overall and theme scores and trends, scorecard link, expired flag (true/false), number of documents uploaded, scope change flag (true/false), initially invited company (if scope changed)
Requesting Company Information	Requesting contact first and last name, email, tags assigned, number of integrations IDs assigned
Scope Change Details	Name, country and EV ID of target company, current stage and status, request outcome, sharing status, overall and theme scores, published date and scorecard link
Carbon Score	Integration and EV ID, sharing acceptance date (if applicable), carbon management level (insufficient, beginner, intermediate, advanced, leader), carbon scorecard link, expired flag (true/false), carbon scorecard published date



What Data Points Are Available Through Our Ratings API? **DOWNSTREAM** 2/3

Score History	Publication date of selected score, overall and theme scores and trends, scorecard link, expiration flag (true/false), scope change flag (true/false), initially invited company (if scope changed)
Tags and Flags	Code and name of tag assigned
KPI	KPI code, name, theme and active flag (true/false)
Custom Questions	Custom question ID, custom question text, strength and improvement areas related to custom question, number of documents attached to the answer
Corrective Action Plan	Number of corrective action plans requested by the client, number of all corrective actions in rated company's plan, number of corrective actions draft, in progress, rejected, completed, overdue, without approval, not approved, closed, nearest deadline, last edit date, number of documents shared
IQ Plus	Country Code, Industry, Industry Verification Status Partner Risk: Overall risk, Sustainability risk, Procurement risk, Scan risk, Industry risk, Country risk Themes risks: Sustainability Risk, Scan risk, Industry Sustainability risk, Country Sustainability risk Criteria Activation Levels: Name, Theme, Activation level, Description, Issue Description Doc Scan Findings: Document category, Document Type, Related themes, Publication ear, Expiration Date, Document ID Live News: ID, Title, Text, Source, URL, Publication Date Recommendations: Priority, Action, Lens, Status Action Plan: Action, Status, Due Date



What Data Points Are Available Through Our Ratings API? **UPSTREAM**

3/3

Targeted Company (to be assessed) Information	<p><u>Mandatory</u>: Integration ID, legal entity to be assessed, country, rated company contact first and last name, email, phone number, requesting contact first and last name and email</p> <p><u>Non mandatory</u>: parent company (if applicable), procurement category, Tax or VAT ID or DUNS number, website, turnover (USD), number of employees, address, city, zip_code, tags, supplier contact position, requesting contact phone number, sector initiative code (if applicable)</p>
IQ Plus	<p><u>Mandatory</u>: Integration ID (a.k.a. Unique ID), criticality and spend scale if criticality and spend levels provided</p> <p><u>Non mandatory</u>: Criticality Level, Spend level, DUNS Number, Tax ID Number, Country code, Tags, Contact First Name, Contact Last Name, Contact Email</p>



Is there a call limitation for the API requesting methods?

Yes, the client can send maximum 500 requests with maximum 100 suppliers per request daily.



What can I do if I have more than 10 suppliers (subsidiaries) associated with one group scorecard?

For a better data quality, assessments should be performed at site-level. However, if a subsidiary redirects the assessment to the headquarter, it will work as a **scope change** and, in your third party system, you will see the group scorecard in the subsidiary profile.



How many times do I need to assign Integration IDs (mapping process)?

Only once for the implementation, if you already have suppliers in your EcoVadis network. Once the integration is live, the integration ID is automatically generated while sending assessment requests from your third-party system.



How often is data updated?

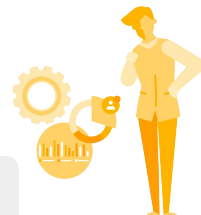
Data is updated on a daily basis, between 0 and 4 AM CET.



Does the API send alerts?

There is no messages or alerts sent by the API. Ecovadis API working in PULL mode.

Find the full FAQ document in our
[**Client Resource Center**](#)



ecovadis

thank you